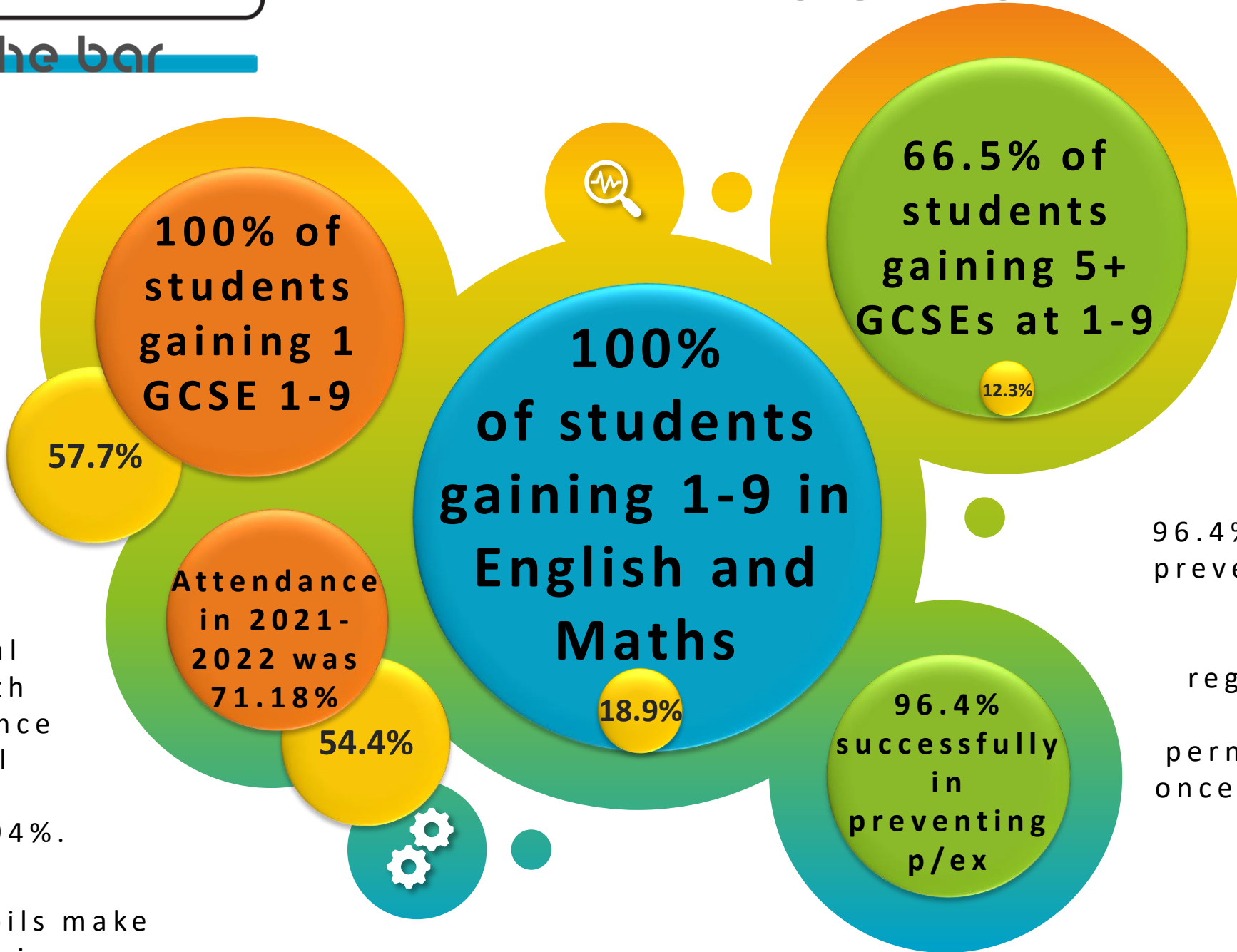


EXAM AND ASSESSMENT RESULTS



Attendance in 2021-2022 was 71.18% (national 54.4 Jun 22) with persistent absence at 80.00%. Pupil premium attendance 67.94%.

On average, pupils make an 11% increase in attendance from joining the ESA from their mainstream settings with 78% increasing their attendance (October 22).

There have been only 2 NEET students in the previous 3 years, and last academic year all students applied for and were enrolled on post-16 courses.

96.4% success rate in preventing permanent exclusion, by supporting dual-registered pupils on the verge of permanent exclusion, once they return back into their school.



EXAM AND ASSESSMENT RESULTS

raising the bar

	2022	2021	National (2022)
Number of Year 11 Pupils	6	5	7806
% Pupil Premium eligible	50%	80%	47% (in AP)
Attainment 8 Average	10.5	7.0	9.0 (2021)
Attainment 8 Average Boys	10.3	6.0	8.1
Attainment 8 Average Girls	10.7	7.7	10.8
Progress 8 Score	N/A	N/A	N/A
1-9 in English and Maths	100%	83%	18.9%
5+ GCSEs at 1-9	66.5%	0%	12.3%
1+ GCSE 1-9	100%	80%	61.4%